



# House Frame Catalog



# RX-456



**Black Silver**



**Navy Silver**

The 456 is a free-form style wraparound safety glasses frame. The frame is semi-rimless, with the lenses mounted into the frame using advanced lens edging technology. The frame is a popular one-size fits most size, with rubber nose pads and rubberized arms for enhanced comfort and sure frame grip. These safety glasses are popular for men and women and come in black or navy blue colors. ANSI Z87.1-2003 APPROVED.



Rx Safety  
123 Lincoln Blvd. Middlesex, NJ 08846  
Phone 732-356-1493 Fax 732-356-7127



# RX-D05



**Black**



**Silver**

The RX-D05 has a cutting edge design and modern flair, while the wraparound lenses offer a close fit and comfortable protection. The rubber nose pads and soft, rubber-tipped temples make this frame style one of our most versatile. The D05 is semi-rimless, with the lenses mounted into the frame using Rx-Safety's advanced in-house lens edging equipment. This unisex frame comes in black and silver frame colors. ANSI Z87.1-2003 APPROVED.



Rx Safety  
123 Lincoln Blvd. Middlesex, NJ 08846  
Phone 732-356-1493 Fax 732-356-7127

# RX-651



**Matte Black**



**Metallic Black**

Model 651 is a stylish, . ANSI Z87.1-2003 APPROVED wrap around safety frame made especially for women.



Rx Safety  
123 Lincoln Blvd. Middlesex, NJ 08846  
Phone 732-356-1493 Fax 732-356-7127

# RX-691



**Black**



**Silver**

The 691 is one of our new free-form style wraparound safety glasses. The frame is semi-rimless, with the lenses mounted into the frame using Rx-Safety's advanced in-house lens edging equipment. The frame for smaller face sizes, with rubber nose pads and rubberized arms for enhanced comfort and frame grip.

These ANSI-approved safety glasses are popular for men and women and come in black and silver frame colors. ANSI Z87.1-2003 APPROVED.



Rx Safety  
123 Lincoln Blvd. Middlesex, NJ 08846  
Phone 732-356-1493 Fax 732-356-7127

# RX-5008



**Black**



**Brown**

These well-made plastic safety wraps are lightweight and comfortable. ANSI Z87 Safety APPROVED.



Rx Safety  
123 Lincoln Blvd. Middlesex, NJ 08846  
Phone 732-356-1493 Fax 732-356-7127

# RX-1171



**Red**



**Black**

These well-made plastic safety wraps are lightweight and comfortable. ANSI Z87 Safety APPROVED.



Rx Safety  
123 Lincoln Blvd. Middlesex, NJ 08846  
Phone 732-356-1493 Fax 732-356-7127

# RX-1205



**Blue**



**Black**

Modern sporty lightweight and comfortable plastic safety wrap.

Size Large to Extra Large 64-16-140



Rx Safety  
123 Lincoln Blvd. Middlesex, NJ 08846  
Phone 732-356-1493 Fax 732-356-7127

# R X – 1 3 6 2



**Black**

Large sturdy uni-fit nylon frame that's lightweight and comfortable. Rubber nose pads and rubberized temple bars provide comfortable grip while the wrap around design ensures that your eyes are protected.

**Size Medium – Average 60-13-130**



Rx Safety  
123 Lincoln Blvd. Middlesex, NJ 08846  
Phone 732-356-1493 Fax 732-356-7127

# R X – 1 3 8 7



**Black**

Stylish frame constructed of high impact TR-90 nylon. Rubberized soft grip temple bars and nose pads for secure fit. lateral protective built in side shields to protect around the orbit of the eye.

**Size Medium to Large 58-15-140**



Rx Safety  
123 Lincoln Blvd. Middlesex, NJ 08846  
Phone 732-356-1493 Fax 732-356-7127



# R X – 1 3 8 8



**Silver**

Stylish frame constructed of high impact TR-90 nylon. Rubberized soft grip temple bars and nose pads for secure fit. lateral protective built in side shields to protect around the orbit of the eye.

**Size Medium to Large 58-15-140**



Rx Safety  
123 Lincoln Blvd. Middlesex, NJ 08846  
Phone 732-356-1493 Fax 732-356-7127

# RX-16001



**Black Blue**

The RX-16001 is a plastic wrap around frame made out of TR-90 Nylon with incorporated side face protection. The unique shape of the lenses and the comfortable adjustable nose pads offer a sleek and lightweight feel to these stylish Black/Blue safety frames. This frame is ideal for people with a higher prescription. **ANSI Z87 Safety APPROVED.**



Rx Safety  
123 Lincoln Blvd. Middlesex, NJ 08846  
Phone 732-356-1493 Fax 732-356-7127

# RX-201



**Black**



**Red**



**Silver**

The model 201 features a uniframe nylon frame that is lightweight, durable, and perfect for motorcycle riding. The sporty, wrap around design provides protection from debris and wind, and rubber nose pads ensure all-day comfort. ANSI Z87.1-2003 APPROVED.



Rx Safety  
123 Lincoln Blvd. Middlesex, NJ 08846  
Phone 732-356-1493 Fax 732-356-7127

# R X - 2 0 8

		
Black	Red	Silver
		
Blue / Yellow	Purple / Silver	Taupe

Large stylish wide-fit wrap around safety frame that's made of TR-90 high impact resistant plastic. Perfect for larger men or anyone who commonly has issues with frames being too narrow.

Size Large to Extra Large      62-18-145



Rx Safety  
123 Lincoln Blvd. Middlesex, NJ 08846  
Phone 732-356-1493 Fax 732-356-7127

# RX-506



**Black**



**Tortoise**

Stylish wrap-around frame for Women. Lightweight comfortable high impact TR-90 nylon.

Size Medium 60-18-135



Rx Safety  
123 Lincoln Blvd. Middlesex, NJ 08846  
Phone 732-356-1493 Fax 732-356-7127

# RX-703



**Brown**



**Black**



**Charcoal Blue Grey**

Sharp corners and stylish angles make the 703 a great addition to anyone's sunglass or safety frame collection. This frame comes with perforated rubber nosepieces for increased breathability. The 703 is classic cool and begs to go outside. ANSI Z87.1-2003 APPROVED.



Rx Safety  
123 Lincoln Blvd. Middlesex, NJ 08846  
Phone 732-356-1493 Fax 732-356-7127

# RX-808



**Red**



**Black**



**Silver**

The 808 is a classic and popular style in our safety glasses and prescription sunglasses collections. The frame's stylish rubberized arms and grippy rubber nose pads make it a pleasure to wear, and the frame's light weight and rubberization mean enhanced grip even during the most intense heat and work situations. This is a one-size-fits-most frame and comes in gloss black, silver, and red frame colors. ANSI Z87.1-2003 APPROVED.



Rx Safety  
123 Lincoln Blvd. Middlesex, NJ 08846  
Phone 732-356-1493 Fax 732-356-7127

# RX-8483



**Green**



**Black**

These well-made plastic safety wraps are lightweight and comfortable and offer a stylish wrap-around frame style for Women. The frame is constructed of high impact TR-90 nylon and features rubberized soft grip nose pads. Model 8483 fits best for Medium style heads. ANSI Z87 Safety APPROVED.



Rx Safety  
123 Lincoln Blvd. Middlesex, NJ 08846  
Phone 732-356-1493 Fax 732-356-7127



# RX-901-B



**Black**

Large sturdy uni-fit nylon frame that's lightweight and comfortable. Rubber nose pads and rubberized temple bars provide comfortable grip while the wrap around design ensures that your eyes are protected.

Size Medium 60-18-115



Rx Safety  
123 Lincoln Blvd. Middlesex, NJ 08846  
Phone 732-356-1493 Fax 732-356-7127

# R X – F126



**Black**

Large sturdy uni-fit nylon frame that's lightweight and comfortable. Rubber nose pads and rubberized temple bars provide comfortable grip while the wrap around design ensures that your eyes are protected.

**Frame Dimensions: 56-19-136**



Rx Safety  
123 Lincoln Blvd. Middlesex, NJ 08846  
Phone 732-356-1493 Fax 732-356-7127

# RX-J136



**Black**

The J136 is an in house frame, made of the highest quality tier 90 plastic. Its sleek, wraparound style is highly popular and typically fits medium to large heads. These frames are designed with an adjustable nose bridge, for a perfect fit. The glasses come with rubber temple bars for added comfort, and are available in black. ANSI Z87.1-2003 APPROVED.



Rx Safety  
123 Lincoln Blvd. Middlesex, NJ 08846  
Phone 732-356-1493 Fax 732-356-7127

# RX-JY7



**Black**

The JY7 is a sturdy wraparound frame, which is designed to be comfortable. The frame features detachable foam gaskets, for added flexibility. These glasses have an adjustable nose bridge to assure the perfect fit. The lightweight design makes it easy to wear these for extended periods of time. The JY7 is currently available in black. ANSI Z87.1-2003 APPROVED.



Rx Safety  
123 Lincoln Blvd. Middlesex, NJ 08846  
Phone 732-356-1493 Fax 732-356-7127

# RX-OP-23



**Black**



**Blue**

The OP-23 is a plastic wraparound frame. The frames durable and lightweight design assures a secure fit. ANSI Z87 Safety APPROVED.



Rx Safety  
123 Lincoln Blvd. Middlesex, NJ 08846  
Phone 732-356-1493 Fax 732-356-7127

# RX-P820



**Black**



**Silver**

The P820 is a new and popular style in our safety glasses and prescription sunglasses collections. The frame's sleek, streamlined look and rubber nose pads make it a pleasure to wear for comfort and style, and the P820's light weight and hooked temples mean enhanced grip even during the most intense work or heat situations. This is a one-size-fits-most style and comes in gloss black and silver frame colors. ANSI Z87.1-2003 APPROVED.



Rx Safety  
123 Lincoln Blvd. Middlesex, NJ 08846  
Phone 732-356-1493 Fax 732-356-7127

# R X – Q100, R X – Q200 & R X – Q300



**R X – Q100**



**R X – Q200**



**R X – Q300**

This plastic wrap frame incorporates a rectangular shape and the durable and lightweight design assures a secure fit. ANSI Z87 Safety APPROVED.

Frame Dimensions: 50-19-130



Rx Safety  
123 Lincoln Blvd. Middlesex, NJ 08846  
Phone 732-356-1493 Fax 732-356-7127

# RX-TP198-BK



**Black**

The RX-TP198 is a plastic wraparound frame made out of TR-90 Nylon offered in a sleek black color. The non slip grip on the arm of the frame offers added comfort and protection to allow them to stay securely on your face. The rubber nose piece allows for a lightweight feel and added grip to ensure that they sit comfortably on your nose. This frame is great for riding a motorcycle and working in a machine shop because of the dual function and style of the frame. ANSI Z87 Safety APPROVED.



Rx Safety  
123 Lincoln Blvd. Middlesex, NJ 08846  
Phone 732-356-1493 Fax 732-356-7127



# RX-TP251-CA



## Camouflage

The Camo colored RX-TP251-CA is a lightweight and comfortable frame made out of TR-90 Nylon. The breathable rubber nose pads allow for a secure and lightweight fit on your nose. These frames also have a built in side shield protection which is great for added safety to your eyes. The arm of the frame also has a non slip grip that ensures these stay securely in place while on your head. ANSI Z87 Safety APPROVED.



Rx Safety  
123 Lincoln Blvd. Middlesex, NJ 08846  
Phone 732-356-1493 Fax 732-356-7127

# RX-TP280-BKCA



## Black Camouflage

The RX-TP280-BKCA is a stylish Black exterior and Camo interior colored safety frame made out of TR-90 Nylon. The rubber nosepiece and non slip grip on the arm of the frame allow for a comfortable and secure fit to your head. This frame also has a built in side shield for added protection to your eyes. ANSI Z87 Safety APPROVED.



Rx Safety  
123 Lincoln Blvd. Middlesex, NJ 08846  
Phone 732-356-1493 Fax 732-356-7127

# RX-WAR101



Matte Black



Matte Black with Blue Temple Ends



Matte Black with Neon Green Temple Ends

**Warrior 101 Wraparound Safety Glasses Size  
Medium 54-20-125**



Rx Safety  
123 Lincoln Blvd. Middlesex, NJ 08846  
Phone 732-356-1493 Fax 732-356-7127

# RX-116



**Black**



**Silver**

The Model 116 features some of the best protection offered on any metal wraparound. The thin metal frame is super-lightweight and the wrap-around style lenses offer maximum visibility. For medium to large face sizes. ANSI Z87.1-2003 APPROVED.



Rx Safety  
123 Lincoln Blvd. Middlesex, NJ 08846  
Phone 732-356-1493 Fax 732-356-7127

# RX-525



**Black**

The Model 525 features small and sleek side shields and offers some of the best protection offered on any metal wrap frame. The thin metal frame is super-lightweight and the wrap-around style lenses offer maximum visibility. For medium to large face sizes. Frame size is 60-18-137. ANSI Z87.1-2003 APPROVED.



Rx Safety  
123 Lincoln Blvd. Middlesex, NJ 08846  
Phone 732-356-1493 Fax 732-356-7127

# RX-533



**Black**



**Silver**

Model 533 features a lightweight but durable all-aluminum frame with an ultra-sleek wrap-around design. Spring hinges assure a secure fit, and adjustable nose pads eliminate pressure points on the nose and reduce slippage. ANSI Z87.1-2003 APPROVED.

**Frame Dimensions: 62-16-145**



Rx Safety  
123 Lincoln Blvd. Middlesex, NJ 08846  
Phone 732-356-1493 Fax 732-356-7127

# RX-100



**Black**



**Autumn Brown**



Stylish aviator-shape frame made from durable, non-corrosive stainless steel. Spring hinges for comfort fit. Side shields can be removed when extra protection isn't necessary. A very popular frame suitable for many industries and conditions. ANSI Z87.1-2003 APPROVED.



Rx Safety  
123 Lincoln Blvd. Middlesex, NJ 08846  
Phone 732-356-1493 Fax 732-356-7127

# RX-180



**Black**



**Brown**

Model R180 is one of the few rimless safety frames. The sleek, contemporary styling does not sacrifice safety and features removable PermaShield side shields and spring hinges for added comfort. The lightweight but strong and durable frames are made from 100% Pure Titanium (Nickel Free to eliminate allergic reactions). ANSI Z87.1-2003 APPROVED.



Rx Safety  
123 Lincoln Blvd. Middlesex, NJ 08846  
Phone 732-356-1493 Fax 732-356-7127



# RX-202



**Gunmetal**

These sturdy, double-bridged metal frames come equipped with side shields, and are a great practical choice for your safety glass needs.

**Frame Dimensions: 54-18-140**



Rx Safety  
123 Lincoln Blvd. Middlesex, NJ 08846  
Phone 732-356-1493 Fax 732-356-7127

# R X – 320



**Copper**



**Gunmetal**

Metal safety frame with a contemporary, square shape provides superior eye protection with removable PermaShield side shields. Spring hinges guarantee a comfortable, stylish fit. ANSI Z87.1-2003 APPROVED.

Frame Dimensions: 50-21-140, 52-21-145



Rx Safety  
123 Lincoln Blvd. Middlesex, NJ 08846  
Phone 732-356-1493 Fax 732-356-7127

# R X – 400



**Gunmetal**

Model 400 features lightweight stainless steel frames with a fashionable and stylish rectangular shape. Rubber temple bars eliminate any pressure points behind the ears and spring hinges provide the ultimate in comfort. Removable side shields provide added protection. ANSI Z87.1-2003 APPROVED.



Rx Safety  
123 Lincoln Blvd. Middlesex, NJ 08846  
Phone 732-356-1493 Fax 732-356-7127

# R X – 500



**Antique Gold**



**Gunmetal**

**Frame Price: \$30.00** Standard, inexpensive, but durable safety frame with spring hinges and removable side shields. Stylish frame and comfortable fit.

**ANSI Z87.1-2003 APPROVED.**

**Frame Dimensions: 49-18-140 , 51-18-145**



Rx Safety  
123 Lincoln Blvd. Middlesex, NJ 08846  
Phone 732-356-1493 Fax 732-356-7127

# RX-554



**Black**



**Gold**

The Rx-554 is a lightweight safety frame that looks great and gets the job done. It features removable side shields for safety and mildly adjustable rubber nose pads for comfort. NSI Z87.1-2003 APPROVED.

**Frame Dimensions: 52-18-145**



Rx Safety  
123 Lincoln Blvd. Middlesex, NJ 08846  
Phone 732-356-1493 Fax 732-356-7127

# RX-557-48



**Gold**

The Rx-557 is a lightweight and stylish safety frame that's great for use on the job site and at home. This frame is ANSI 287 APPROVED.

**Frame Dimensions: 48-20-135**



Rx Safety  
123 Lincoln Blvd. Middlesex, NJ 08846  
Phone 732-356-1493 Fax 732-356-7127

# R X – 600



**Gunmetal**



**Antique Gold**



**Pewter**

This inexpensive, lightweight, and durable metal safety frame offers a comfortable and stylish fit. Features PermaShield side shields for added protection. Available in Antique Gold or Pewter. ANSI Z87.1-2003 APPROVED.

**Frame Dimensions: 62-14-140**



Rx Safety  
123 Lincoln Blvd. Middlesex, NJ 08846  
Phone 732-356-1493 Fax 732-356-7127

# R X – 700



**Gunmetal**



**Brown**

Lightweight and durable, the Rx-700 is the ultimate in safety. The 700 comes with PermaShield side shields and spring hinges for a comfortable fit. ANSI Z87.1-2003 APPROVED.

**Frame Dimensions: 50-20-145**



Rx Safety  
123 Lincoln Blvd. Middlesex, NJ 08846  
Phone 732-356-1493 Fax 732-356-7127



# R X – 850



## Gunmetal

Made of flex nickel and hand-made nylon materials, this frame is lightweight, flexible and comfortable. Mono block, spring hinges, and removable side shields finish these fashionable safety glasses with durability and protection. ANSI Z87.1-2003 APPROVED.

**Frame Dimensions: 49-18-140**



Rx Safety  
123 Lincoln Blvd. Middlesex, NJ 08846  
Phone 732-356-1493 Fax 732-356-7127

# RX-080



**Charcoal**



**Tortoise**

This acrylic plastic frame incorporates a rectangular shape with spring hinges for comfort and style. Removable side shields provide added protection, and the durable and lightweight design assures a secure fit.

**ANSI Z87.1-2003 APPROVED.**



Rx Safety  
123 Lincoln Blvd. Middlesex, NJ 08846  
Phone 732-356-1493 Fax 732-356-7127

# RX-15011



**Black Crystal**

The RX-15011 is a rectangular hipster style safety frame made out of high quality TR-90 Nylon that has permanent side shields for added protection. The sleek black with crystal clear inside plastic frame has an adjustable nosepiece that allows for added comfort and a secure fit. ANSI Z87+ Safety APPROVED.



Rx Safety  
123 Lincoln Blvd. Middlesex, NJ 08846  
Phone 732-356-1493 Fax 732-356-7127

# RX-17011 & RX-17012



**Black Orange**



**Black**



**Green**

The RX-17011 is a rectangular plastic frame that provides a secure and comfortable fit. The sleek plastic frame comes in 2 colors and with removable side shields for added protection. ANSI Z87+ Safety APPROVED.



Rx Safety  
123 Lincoln Blvd. Middlesex, NJ 08846  
Phone 732-356-1493 Fax 732-356-7127

# RX-206



**Brown Orange**



**Black Yellow**



**Black Yellow with Smoke Grey**

Finally, a really cool look to wear in hot and dusty environments! With great features and benefits to match, the 206 has that "wrap" look combined with a flatter lens pocket that will accommodate most prescriptions. This frame comes with clear or smoke gray side shields to match the environment you expect to be working in, and a removable dust dam prevents sweat and debris from falling into your eyes from above.

**ANSI Z87.1-2003 APPROVED.**



Rx Safety  
123 Lincoln Blvd. Middlesex, NJ 08846  
Phone 732-356-1493 Fax 732-356-7127

# RX-230



**Red**



**Black**

RX-230 is a premium protective women's eyewear frame centered on protection and performance. The RX-230 frame has a head hugging temple design and excellent splash and side protection. The frame is made out of a durable TR-90 plastic for high impact safety and chemical resistance. ANSI Z87.1-2003 APPROVED.



Rx Safety  
123 Lincoln Blvd. Middlesex, NJ 08846  
Phone 732-356-1493 Fax 732-356-7127

# R X – 3 7 5



**Black**



**Tortoise**

Designer TR-90 plastic with head hugging temple design and excellent splash and side protection.

Size Small to Medium 52-19-145

**\*suitable for high prescriptions**



Rx Safety

123 Lincoln Blvd. Middlesex, NJ 08846

Phone 732-356-1493 Fax 732-356-7127

# RX-70F



**Charcoal Grey**

**Durable plastic frame features excellent craftsmanship and a comfortable fit. Non-removable cup side shields. Size Small to Medium 45-25-145**

**\*suitable for high prescriptions**



Rx Safety  
123 Lincoln Blvd. Middlesex, NJ 08846  
Phone 732-356-1493 Fax 732-356-7127



# R X-7 0-P C



**Transparent Black with Black Opaque Side Shields**

Comfortable fit 70-PC frame in transparent black,  
equipped with removable side shields.  
Size Small to Medium 45-25-140

**\*suitable for high prescriptions**

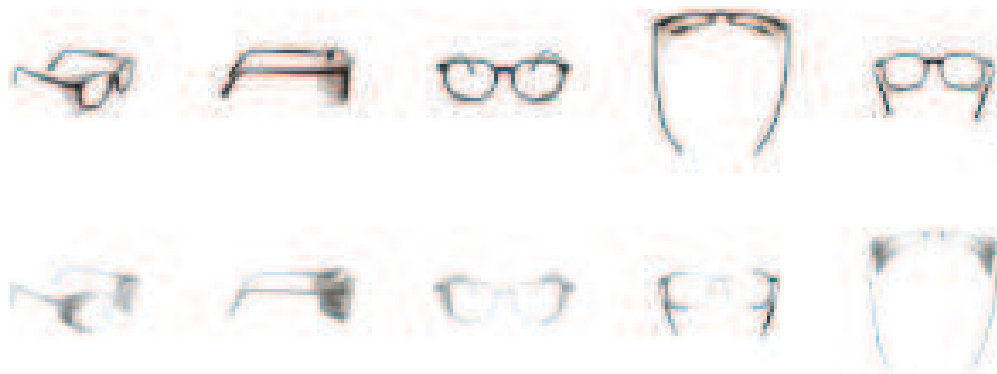


Rx Safety  
123 Lincoln Blvd. Middlesex, NJ 08846  
Phone 732-356-1493 Fax 732-356-7127

# RX-75



**Brown**



**Clear**

The Model 75 combines form and function: the plastic frame provides a secure, comfortable fit, and the wire mesh side shields provide superior protection and breathability. ANSI Z87.1-2003 APPROVED.



Rx Safety  
123 Lincoln Blvd. Middlesex, NJ 08846  
Phone 732-356-1493 Fax 732-356-7127

# RX-88



**Brown**

The Quantum Rx-88 Safety Frame has molded side shields and ratcheting temple bars for enhanced comfort. The RX-88 is designed for industrial uses with its unbreakable polycarbonate design and comfortable universal fit. ANSI Z87.1-2003 APPROVED.



Rx Safety  
123 Lincoln Blvd. Middlesex, NJ 08846  
Phone 732-356-1493 Fax 732-356-7127

# R X – F10



With great features and benefits to match, the F10 has that "wrap" look combined with a flatter lens pocket that will accommodate most prescriptions. The frame comes with perforated brow guard, perforated silicone nose guard and rubberized temple bar for a secure fit.

**ANSI Z87.1-2003 APPROVED. Size: M,L 55-19-150**



Rx Safety  
123 Lincoln Blvd. Middlesex, NJ 08846  
Phone 732-356-1493 Fax 732-356-7127

# RX-OP-28



**Black Fade**



**Tortoise**

The OP-28 plastic frame incorporates a rectangular shape and comes with Removable side shields to provide added protection. The durable and lightweight design assures a secure fit. ANSI Z87 Safety APPROVED.



Rx Safety  
123 Lincoln Blvd. Middlesex, NJ 08846  
Phone 732-356-1493 Fax 732-356-7127

# RX-OP-30



**Black**



**Black Tortoise**

The OP-30 plastic frame incorporates a rectangular shape and comes with Removable side shields to provide added protection. The durable and lightweight design assures a secure fit. ANSI Z87 Safety APPROVED.



Rx Safety  
123 Lincoln Blvd. Middlesex, NJ 08846  
Phone 732-356-1493 Fax 732-356-7127

# RX-W200



**Black**



**Blue**

The W200 is a premium protective women's eyewear frame centered on protection and performance. With a head-hugging temple design, excellent splash and side protection, and durable, chemical-resistant TR-90 material, the W200 is a stylish and safe women's frame. ANSI Z87.1-2003 APPROVED.

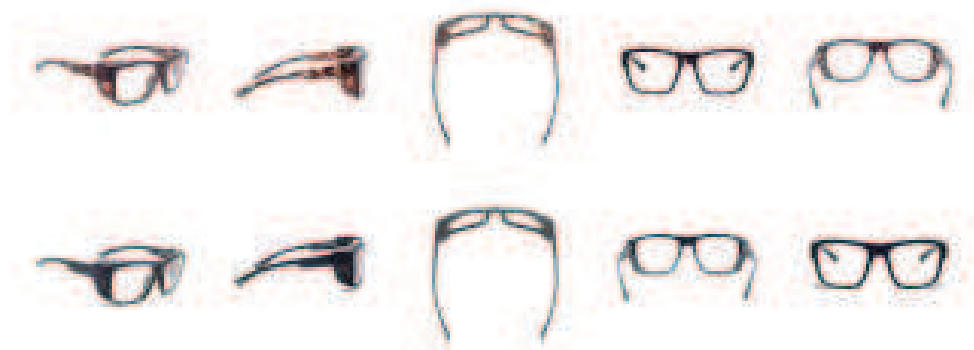


Rx Safety  
123 Lincoln Blvd. Middlesex, NJ 08846  
Phone 732-356-1493 Fax 732-356-7127

# RX-X25-BULK



**Tortoise**



**Black**

The RX-X25-BULK comes with detachable side shields as an added safety feature. The shields pop out with ease for enhanced flexibility. It is a stylish and lightweight frame, designed with comfort in mind. These glasses also feature a brow guard, and a rubberized temple bar for secure grip. The frames typically fit medium to large heads, and are available in two colors - Matte Black and Tortoise shell. ANSI Z87.1-2003 APPROVED.



Rx Safety  
123 Lincoln Blvd. Middlesex, NJ 08846  
Phone 732-356-1493 Fax 732-356-7127



# RX-X26



**Black**

The RX X26 is a lightweight and comfortable frame featuring clear side shields. The side shields are easily removable, adding to the flexibility of the glasses. The frame is made of the highest quality tier 90 plastic. These glasses are available in Black. ANSI Z87.1-2003 APPROVED.



Rx Safety  
123 Lincoln Blvd. Middlesex, NJ 08846  
Phone 732-356-1493 Fax 732-356-7127

# RX-JY7-GOGGLE



**Black**

The JY7 is a sturdy wraparound goggle, which is designed to be comfortable. The goggle features detachable foam gaskets, for added flexibility. These goggles have an adjustable nose bridge to assure the perfect fit. The lightweight design makes it easy to wear these for extended periods of time. The JY7 is currently available in Black. ANSI Z87.1-2003 APPROVED.



Rx Safety  
123 Lincoln Blvd. Middlesex, NJ 08846  
Phone 732-356-1493 Fax 732-356-7127

# RX-PDX



**Black**

The PDX is an economical, high-performance goggle with the core performance features of the goggle line. The roomy frame is designed with an Rx Insert that fits most prescriptions. The front lenses are 2.6mm high-impact resistant polycarbonate. The 40mm strap has slides for easy adjustment. All PDX lenses provide 100% UVA/UVB Protection. ANSI Z87.1-2003 APPROVED.



Rx Safety  
123 Lincoln Blvd. Middlesex, NJ 08846  
Phone 732-356-1493 Fax 732-356-7127

# RX – RK 2



**Black**

Vented side ports to reduce fogging with foam that protects against splashing and sweat, elastic headband is fully adjustable.

Size Large to Extra Large 58-22-ADJ

**\*suitable for high prescriptions**



Rx Safety  
123 Lincoln Blvd. Middlesex, NJ 08846  
Phone 732-356-1493 Fax 732-356-7127

# IR-17004-BK-RX



**Black**

The RX-17004 is a classic flip-up style that offers versatility for a variety of environments. This flip-up is perfect for welders and industrial workers who require a shaded lens while working with high intensity light sources and a traditional clear impact-resistant polycarbonate lens when their task is complete. The RX-17004 offers adjustable temple bars that extend and pivot up and down allowing greater comfort for longer wearing time and is suitable for Rx lenses.



Rx Safety  
123 Lincoln Blvd. Middlesex, NJ 08846  
Phone 732-356-1493 Fax 732-356-7127



Rx Safety | 123 Lincoln Blvd. Middlesex, NJ 08846  
Phone 7 3 2 – 3 5 6 – 1 4 9 3 | Fax 7 3 2 – 3 5 6 – 7 1 2 7